

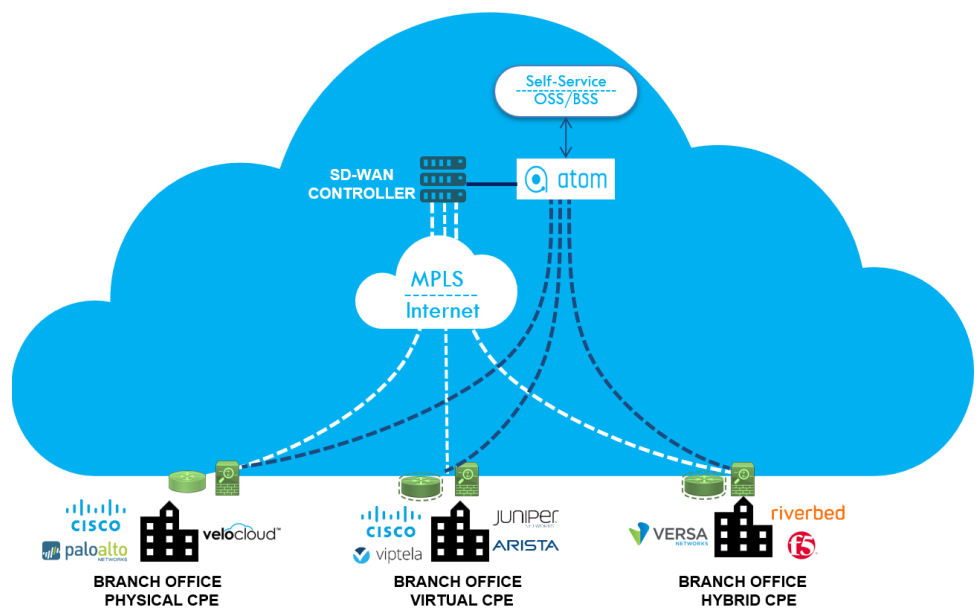
# ATOM Multi-Vendor Automation for SD-WAN

Delivers Real-Time Assurance, Analytics, and Orchestration

## Benefits of ATOM Multi-Vendor Automation for SD-WAN

- Improve time-to-market and reduce OpEx with Zero Touch Provisioning
- Ensure network availability through Closed-Loop Automation
- Increase visibility and network awareness of SD-WAN and legacy WAN infrastructure with Analytics and Telemetry
- Scale across the WAN infrastructure with ATOM's cloud native architecture
- Reduce MTTR and have more command over the SD-WAN and legacy WAN infrastructure

Many organizations are excited about the prospect of deploying SD-WAN but are hesitant due to the complexities involved. Concerns involving existing branch and tooling infrastructure are warranted and consequently these investments require protection. If not fully vetted, requirements and non-standardized SD-WAN solutions could result in a vendor lock situation. WAN optimization and security are critical to any branch office infrastructure, and not all SD-WAN vendors deliver a complete solution forcing the organizations to stick to individual components providing these solutions.



Anuta Networks ATOM Multi-Vendor Automation enables organizations to handle the complexities of multi-vendor, multi-platform infrastructure through a comprehensive coverage of more than 45 different vendors and 100+ platforms including SD-WAN vendors like Cisco Viptela, Versa Networks, and Velocloud

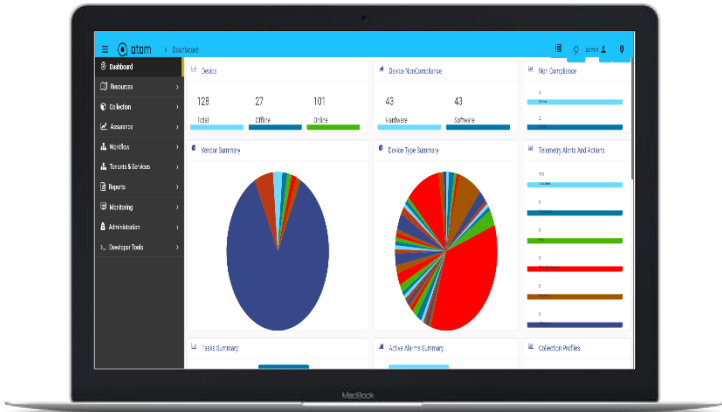
Leveraging ATOM's advanced capabilities in automated provisioning, analytics, orchestration and pro-active assurance: enterprises and service providers can take a confident step towards creating smart networks and a more successful future through digital transformation.

ATOM Multi-Vendor Automation will also serve as an overall orchestrator to the WAN infrastructure including SD-WAN, Security, WAN optimization, and legacy devices.

## Reduce OpEx with ATOM's Zero Touch Provisioning

Anuta's ATOM Multi-Vendor Automation offers Zero Touch Provisioning of both underlay and overlay network infrastructure. Templated configurations are pushed to the branch CPEs to make them immediately operational allowing them to communicate with SD-WAN controllers. ATOM's abstraction capabilities enable provisioning of any branch infrastructure device helping organizations mitigate truck rolls and dependency on multi-skilled staff there by reducing OpEx.

ATOM also offers software image management allowing one-touch upgrade of devices where ATOM goes through a series of pre-checks, upgrade procedures and post-checks to ensure a successful upgrade.

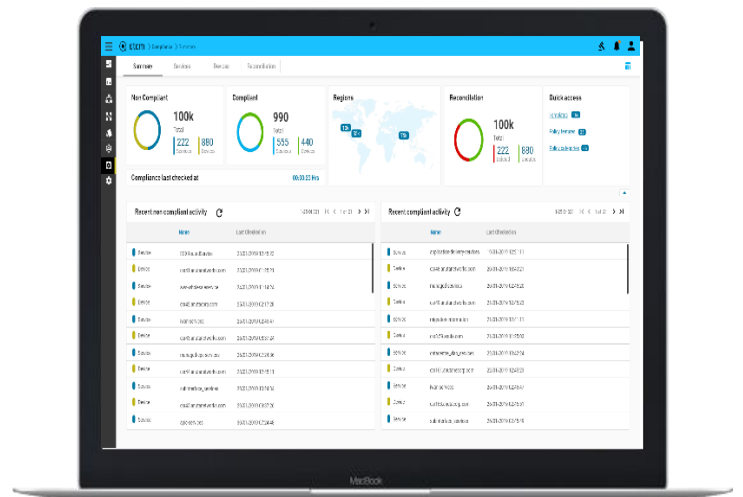


## Improve MTTR using ATOM's Compliance, Assurance & Closed Loop Automation through Analytics & Machine Learning

ATOM Multi-Vendor Automation derives telemetry from the WAN infrastructure and runs its powerful analytic algorithms to obtain contextual and actionable insights. It also creates network awareness and provides unified, end-to-end visibility across SD-WAN and existing infrastructure.

ATOM's Closed-Loop Automation (CLA) with machine learning capabilities takes pro-active remediation actions based on baselined network behavior. CLA empowers organizations to reduce MTTR, achieve SLA compliance and improve operational efficiency across the organization.

Configuration and image compliance with reconciliation upon deviation also ensures consistency across the WAN infrastructure.



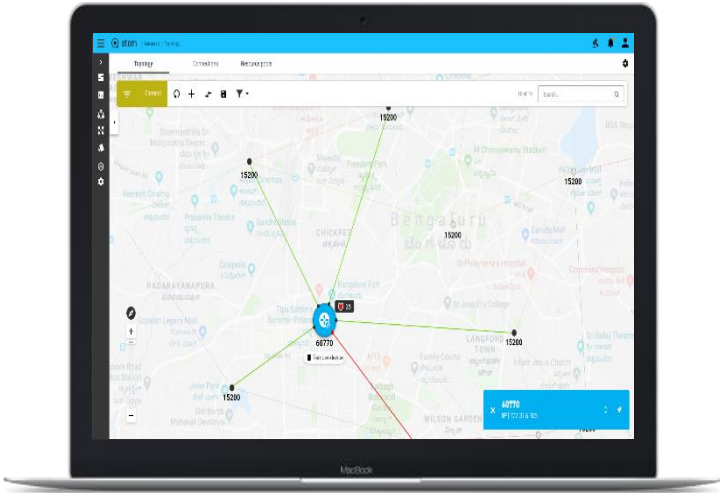
## Protect your existing network investments through ATOM's Brownfield support

With its device and service discovery capabilities, ATOM helps onboarding of existing network devices and services and builds a topology of both underlay and overlay networks.

A rich southbound interface enables ATOM to connect to devices over a variety of protocols including APIs. It also collects and normalizes the configurations from devices for service modeling.

With advanced workflow automation, ATOM ties different service models together and allows automation of repetitive method of procedures (MOP) such as software upgrades.

ATOM also delivers single-click provisioning of applications across SD-WAN, next-generation firewalls, legacy devices, and WAN optimization devices.

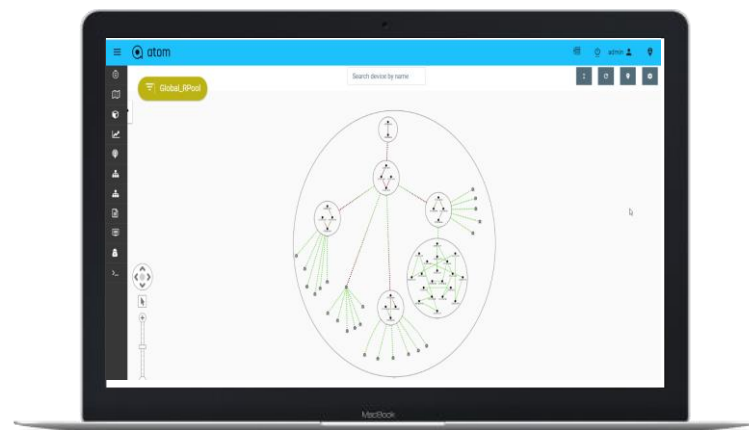


## Scale Massively using ATOM's Cloud Native Architecture

ATOM Multi-Vendor Automation has been designed and developed with cloud characteristics in mind. All related services are containerized and can be deployed in Kubernetes environments both on-prem and in public cloud providers AWS, Google Cloud and Microsoft Azure. Best-in-class security and encryption is also offered by ATOM in public cloud deployments.

The horizontally, massive scalable architecture of ATOM supports more than 1M devices and organizations can scale up to meet their increasing workloads.

The distributed architecture of ATOM also allows deployment of ATOM agents at the edge of the network catering to latency sensitive use cases.



## Integrate into existing tooling infrastructure using ATOM's Open platform

ATOM's open architecture enables integration into northbound tools like OSS/BSS or ITSM tools such as Service Now and Jira. Some of ATOM's differentiation lies in its ability to facilitate business intelligence tool participation in network automation through ATOM's advanced workflow suite.

The interoperability with service management tools also allows integration of approval flows into workflow management enabling seamless operation of the WAN infrastructure.

ATOM's Multi-Vendor Automation allows service management tools to act as a single-pane-of-glass for SD-WAN and legacy infrastructure thus greatly simplifying management operations.

The abstraction layer of ATOM also allows integration into popular automation tools like Ansible and custom python scripts all serving as the single-source-of-truth for a given WAN infrastructure.

To learn how Anuta Network's ATOM Multi-Vendor Automation can help you simplify your SD-WAN implementation, contact us at <http://www.anutanetworks.com>

